

PRA

FOLD-UP DOOR

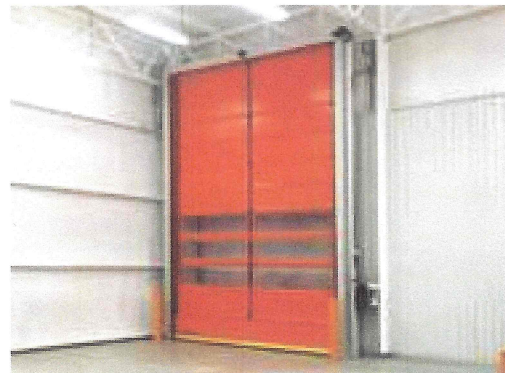


Application

- Rapid door with high mechanical strength
- Equally suitable to interior and exterior applications, especially in windy areas or those with pressure differentials.

Advantages

- Protects against wind and climate conditions (class 3 resistance to wind).
- High speed of operation with low noise level.
- High corrosion resistance.
- Pre-mounted / pre-installed doors.
- Integrated safety systems (avoid impact damage).
- Ideal for industries with hygiene requirements.
- Facilitates traffic flow.
- Suitable for exterior use.
- Easy to mount, saving assembly time.
- Saves costs.



MAXIMUM DIMENSIONS

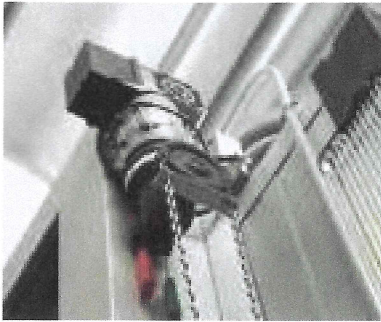
Opening width	Max. 7m
Opening height	Max. 7m
Maximum total area	Max. 34m ²

Other specific dimensions upon request

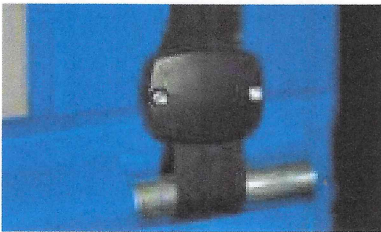
// Standard features

Structure

- Anodised extruded aluminium guides with dust guard brushes and cable housing (hidden cables).
- Anodised extruded aluminium lintel.
- Shaft, support panel and other fixtures in stainless steel.
- PVC fabric with strong nylon lining, grammage 950 g/m², thickness 1mm, with two rows of 400 x 1200mm windows.



Motor



Attachment of straps

Motor

- STANDARD MOTOR: 3x380/400 VAC+N+PE, 0.65 kW, 90 - 115 rpm, IP54.
- Door speed: approx. 0.6 - 0.7 m/s.
- Electronic limit switches.
- Parachute braking mechanism.
- Low noise gears.
- Unlocking with handles and chain.

Control unit

- Digitally controlled door positioning and adjustment.
- Standard model equipped with 3P+N+T CEE plug, 16A, 400V, IP65.
- Control voltage 24V, 50Hz.
- Long life mechanical block contacts.
- External connection by means of a set of high quality terminals.
- IP65 protective case in ABS plastic for mounting in positive temperature areas.
- Three phase 3x380/400 VAC+N+PE connection.

Safety

- IP68 photocell barrier installed as standard.
- Emergency stop button inside and outside
- Unlocking with handles and chain.

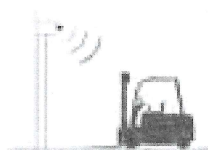
// Optional features

- Door manufactured **ENTIRELY** in **STAINLESS STEEL** (guides, lintel, control panel, base and screws in 304 stainless steel).
- Unlocking with handles and chain.
- Several opening options: radar, handle, magnetic field and remote control.

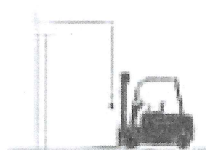
- Flashing safety lighting.
- Motor cover: normal, IP65 or metal.
- Additional viewing windows.
- White lacquered frames.
- Hidden straps (inverted fabric).
- Front motor.
- **TURBO OPTION** - opening speed 1 m/s



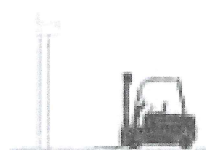
// Activation options



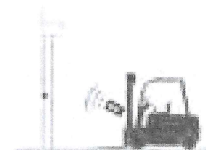
■ radar



■ pull cord



■ induction loop



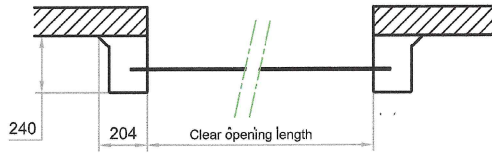
■ remote control

// Distinguishing features

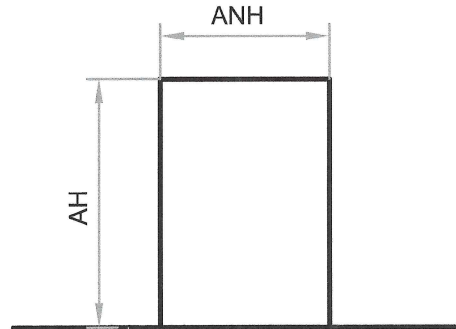
- Guides and lintel made from anodised aluminium, some components in stainless steel. **Very resistant to corrosion.**
- Made to customers specification and requirements. **Large range of customization options including colours, vinyl designs, number of windows...**

PRA FOLD-UP DOOR

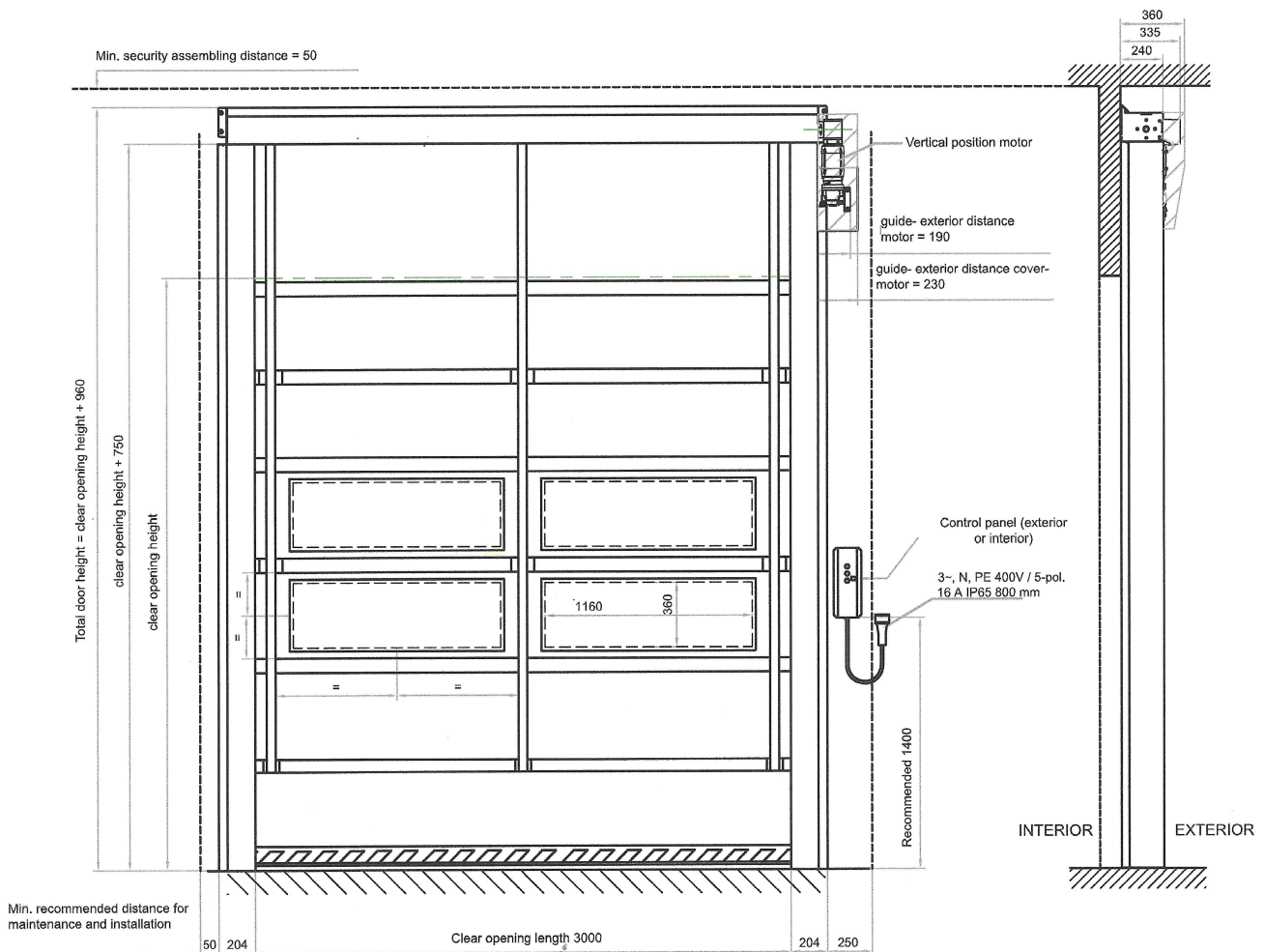
ANCHOR BOLT AND GUIDE



WALL OPENING DIMENSIONS



OVERALL DIMENSIONS



All dimensions are in millimeters